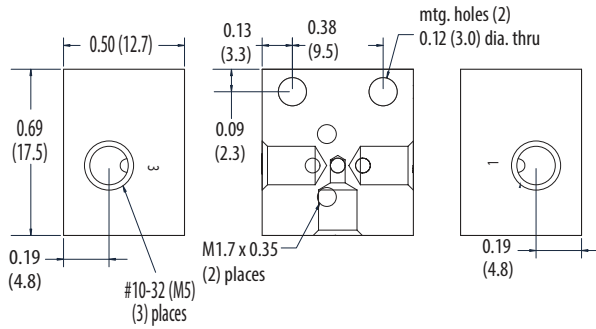
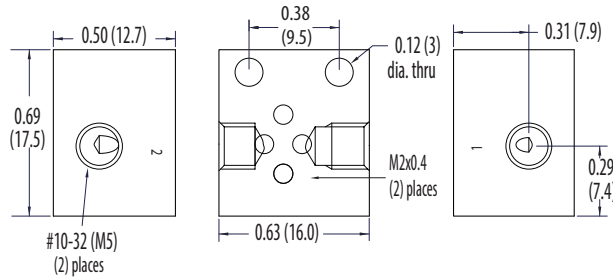


10 mm Solenoid Valve Manifolds

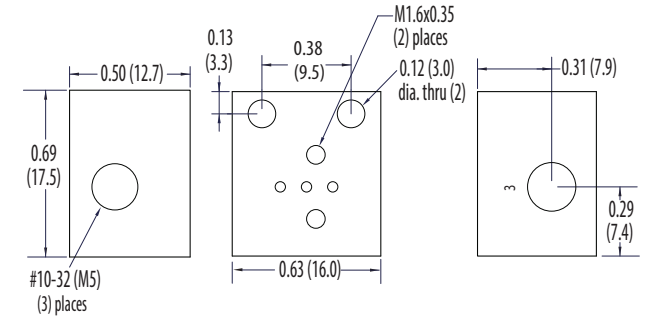
Standard Single-Station



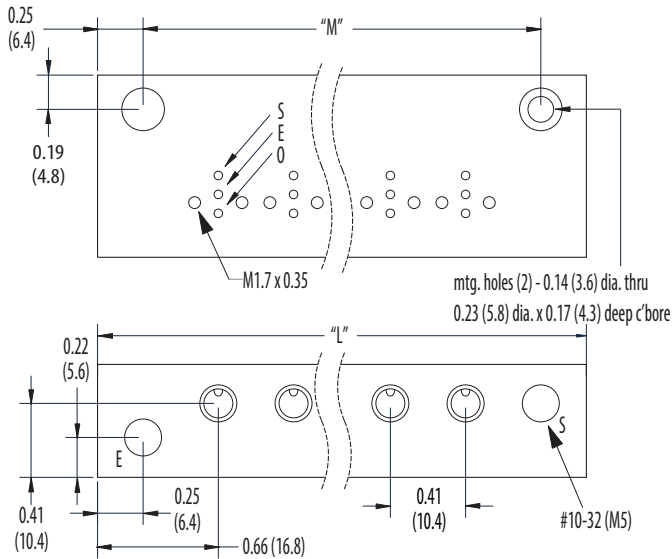
High Flow Single-Station



ISO 15218 Single-Station

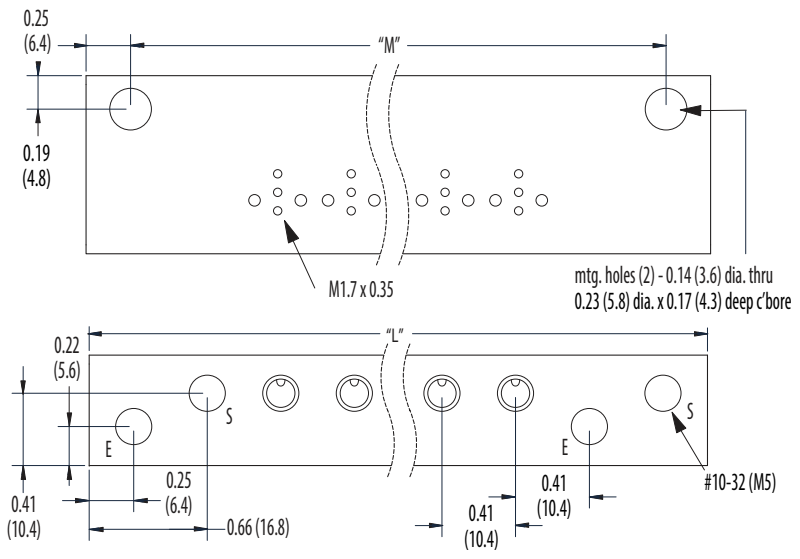


2- to 8-Station



Stations	"L"	"M"
2.....	1.74 (44.2)	1.24 (31.5)
4.....	2.57 (65.3)	2.07 (52.6)
6.....	3.39 (86.1)	2.89 (73.4)
8.....	4.22 (107.2)	3.72 (94.5)

10- to 16-Station



Stations	"L"	"M"
10.....	5.87 (149.1)	5.37 (136.4)
12.....	6.70 (170.2)	6.20 (157.5)
14.....	7.52 (191.0)	7.02 (178.3)
16.....	8.35 (212.1)	7.85 (199.4)

Clippard

877-245-6247 | clippard